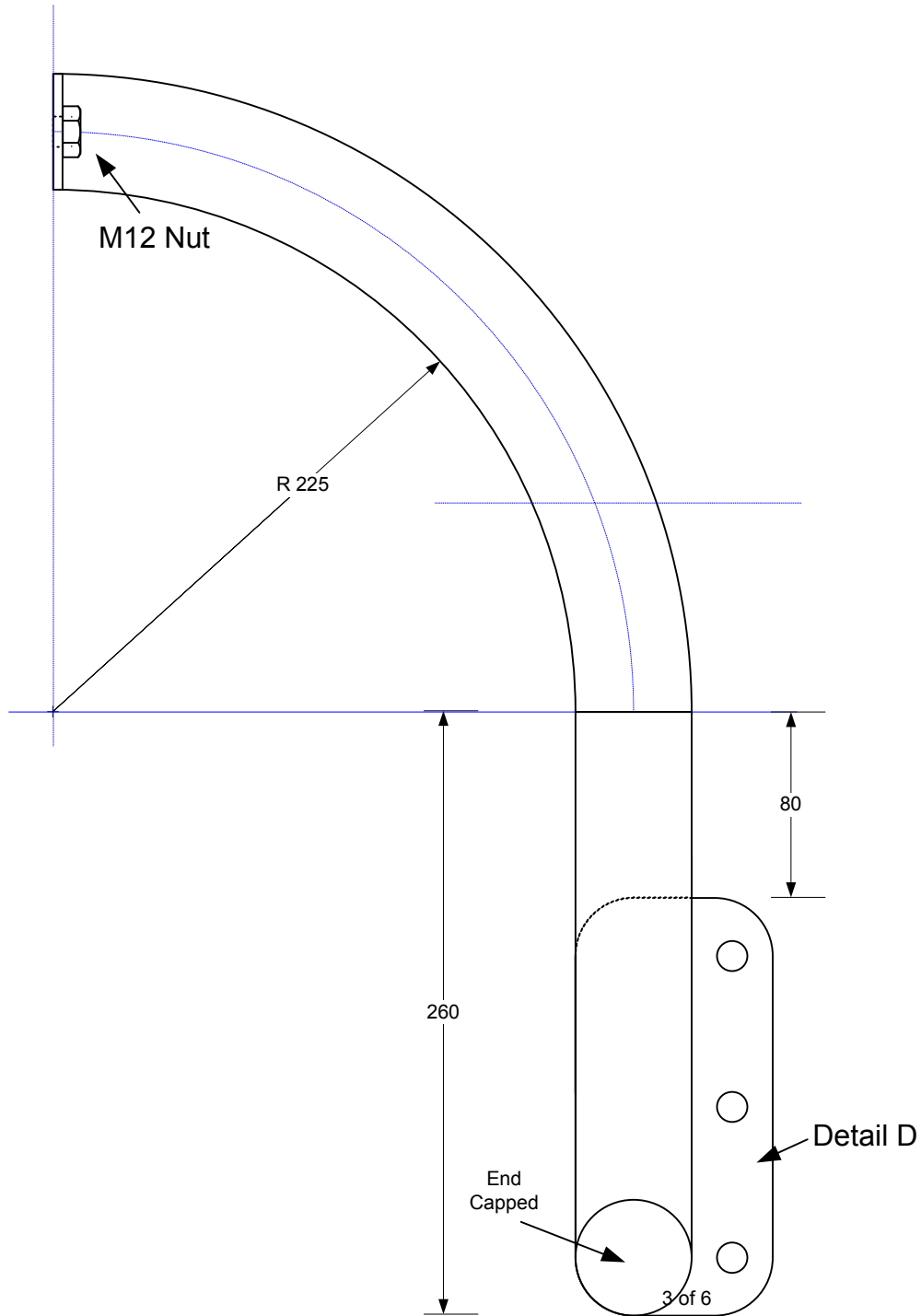


Starboard Rear Support Arm

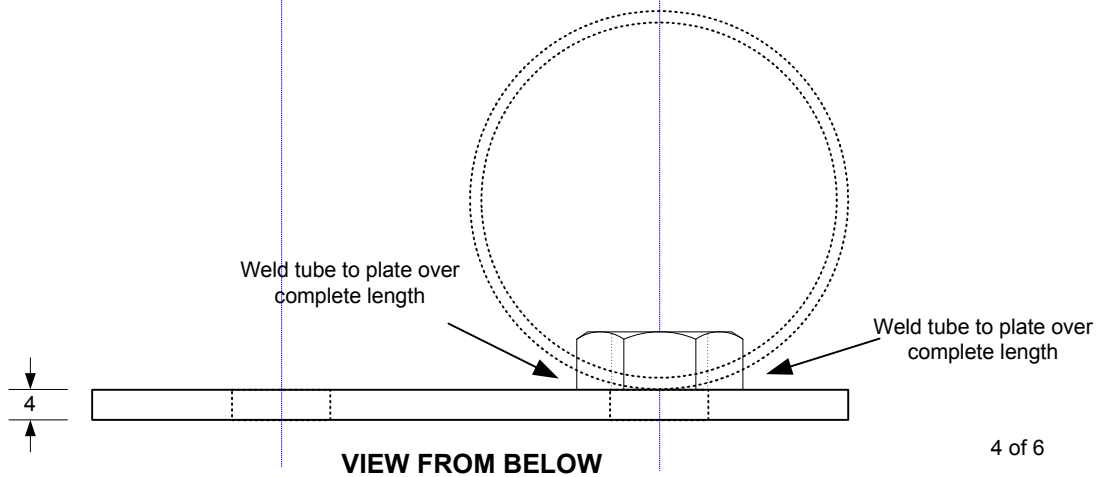
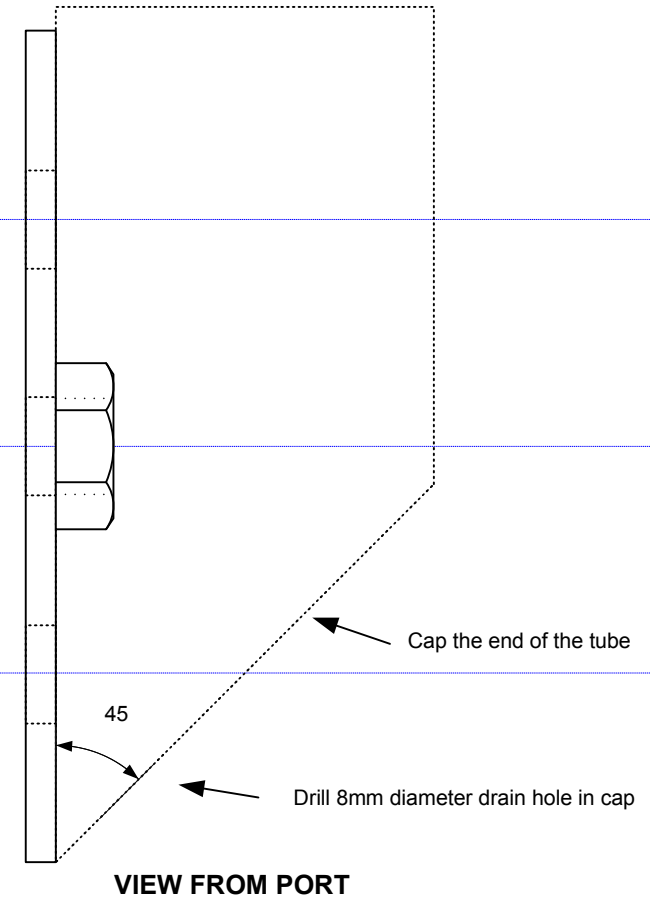
View looking forward

Port arm is mirror image of this



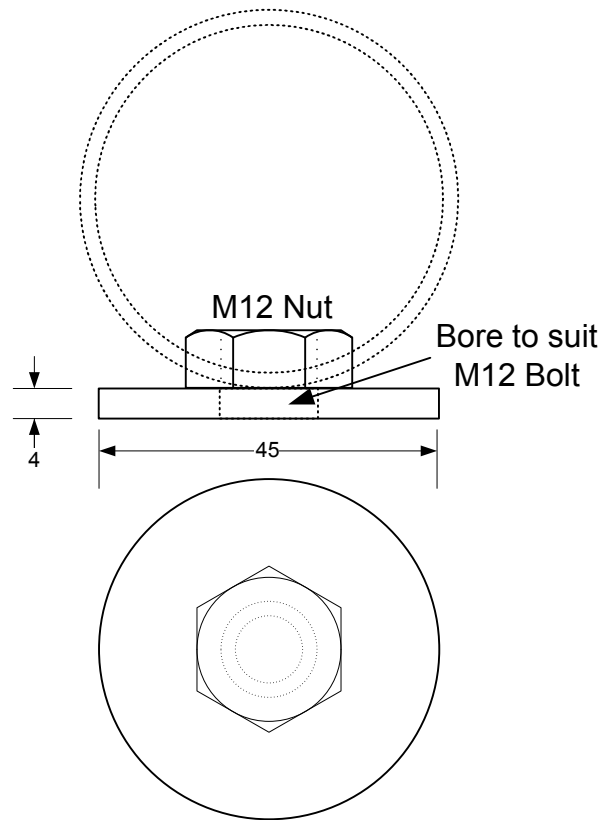
Starboard Forward Support Arm  
view looking aft

Port arm is mirror image of this



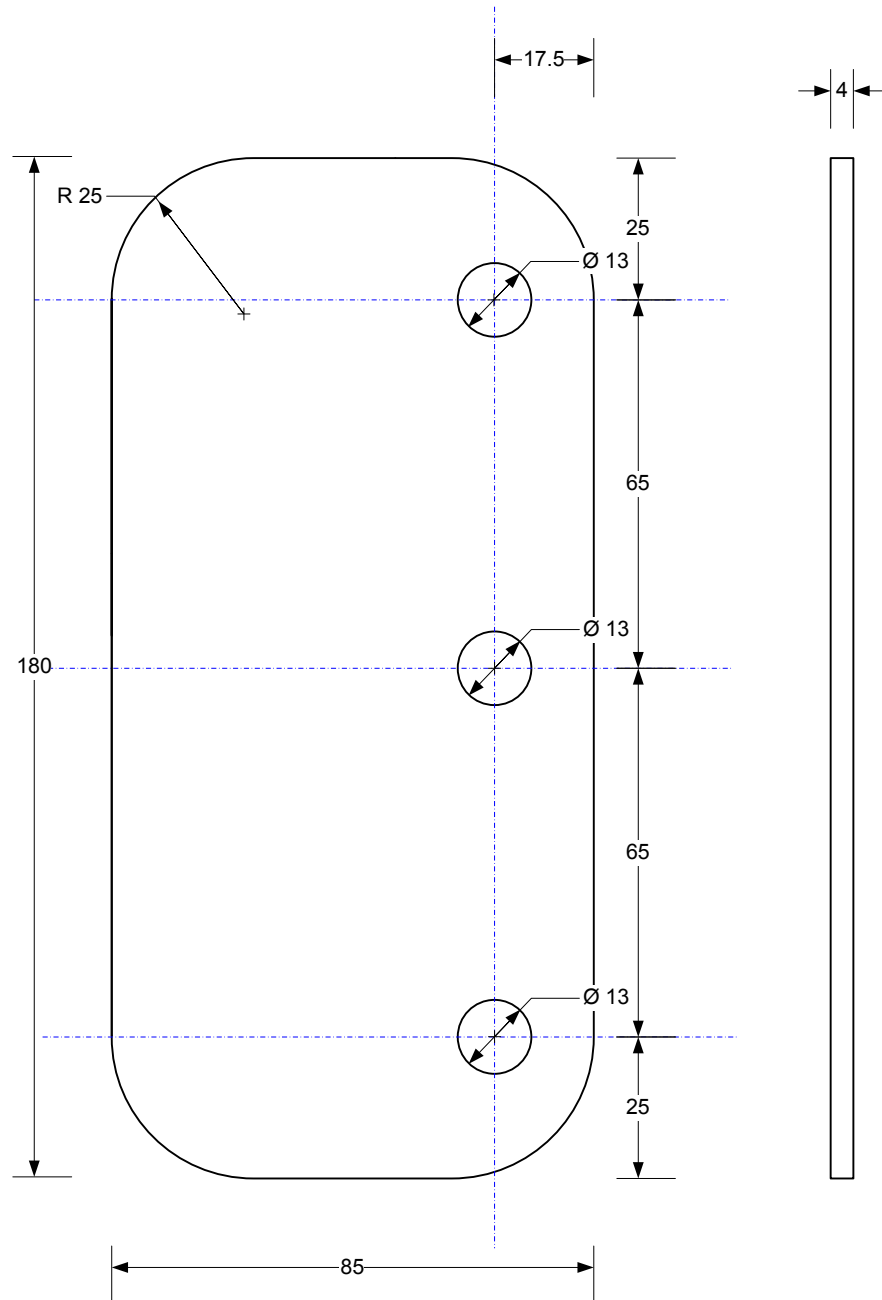
### Detail A: Rear Support Arm Attachment Plate

Starboard plate shown. Port plate is a mirror image of this.



#### Detail C

Nut to be full welded to disc before disc before disc is fully welded to tube.



Detail D: Forward Support Arm Attachment Plate  
 Starboard plate shown. Port plate is a mirror of this.  
 2 of these required.