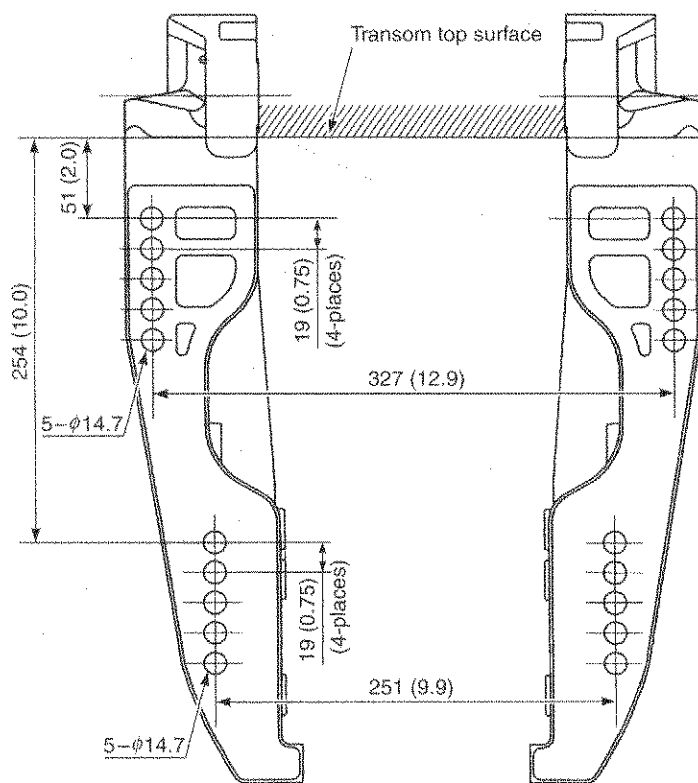


## TRANSOM DIMENSIONS

## DF200/225/250: Transom X, XX type

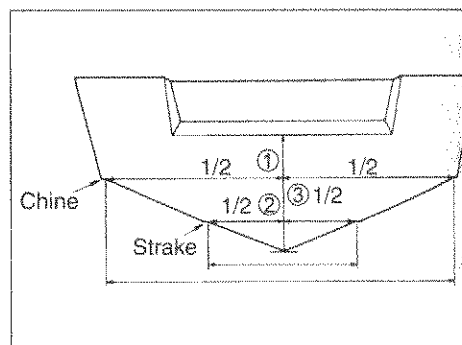
Unit: mm (in)



## ESTABLISHING THE CENTER-LINE

To establish the center of the transom you may use the following procedure:

- (1) Measure across the transom from chine to chine and make a mark on the transom face at 1/2 of this measurement.
- (2) Measure across the transom from strake to strake and make a second mark on the transom face at 1/2 of this measurement.
- (3) Align a straightedge with the marks on the transom face and draw a line. This is the vertical center-line of the transom for a single engine installation.
- (4) Drill mounting holes as in a single engine installation.



**NOTE:**  
Do not drill on  
som.

- For twin engine  
686 mm/27 in
- (1) Following  
previous
  - (2) Following  
of the ve
  - (3) Align a  
installati
  - (4) Drill mou

Chine