



## ZODIAC OF NORTH AMERICA INC

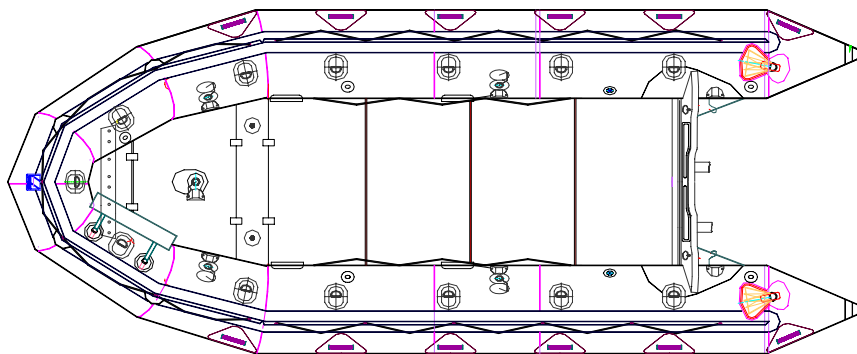
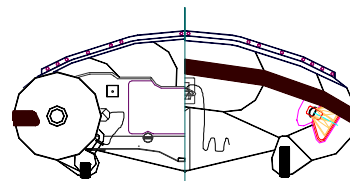
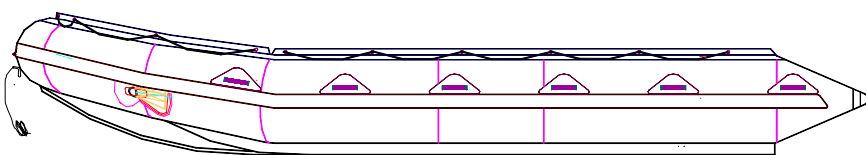
### MILITARY & PROFESSIONAL MARINE DIVISION

# ZODIAC FC 530 IAB

## INFLATABLE ASSAULT BOAT

P/N Z80309

Rev 3 – 22 Apr 05  
TECHNICAL DATA SHEET



### COMBAT TESTED

Well known throughout the world as the definitive Special Forces boat, the FC range is used by more elite soldiers and sailors than any other craft worldwide. It is the only craft of its type that has actually been used in combat in different theaters of operations and comes through with flying colors. This is a result of its unique patented hull shape and various floor systems that allows it to carry combatants in a variety of missions. The hull shape is especially important as it can get a large load on the plane as well as give the driver unsurpassed maneuverability in different and often dangerous conditions. Continually being upgraded for its ever-changing roles, the FC range is Zodiac's most recognizable military boat.

The FC 530 P/N Z80309 is available on special order only.

The overall appearances of the watercraft depicted in this document are trademarks of Zodiac

THIS MATERIAL CONTAINS PROPRIETARY DATA BELONGING TO ZODIAC INTERNATIONAL. UNAUTHORIZED DISCLOSURE, USE OR REPRODUCTION WILL RESULT IN LIABILITY. ZODIAC RESERVES THE RIGHT TO CHANGE THE SPECIFICATIONS OF THIS TECHNICAL DATA SHEET WITHOUT NOTICE.

Dimensions and weight + or - 3 % (5% on prototype)

page 1 / 4

ZODIAC OF NORTH AMERICA INC  
MILITARY & PROFESSIONAL MARINE DIVISION  
540 THOMPSON CREEK ROAD – STEVENSVILLE - MD 21666 - USA  
Phone 410-643-4141 – Fax 410-604-0161  
[www.zodiacmilpro.com](http://www.zodiacmilpro.com) – [www.zodiac.com](http://www.zodiac.com)



## ZODIAC OF NORTH AMERICA INC

### MILITARY & PROFESSIONAL MARINE DIVISION

#### BOAT DEFINITION

##### **CAPACITY**

. maximum number of persons (ISO 6185) :	12	12
. maximum payload including engine and fuels (ISO 6185) :	1710 kg	3770 lb
. floorboard usable area :	3.585 m <sup>2</sup>	38.57 sq ft
. main buoyancy tube volume :	2500 l	88 cu ft

##### **DIMENSIONS**

. overall length :	5.30 m	17' 5"
. inside length :	3.70 m	12' 2"
. overall width :	2.14 m	7'
. inside width :	1.04 m	3' 5"
. weight empty without cylinder :	185 kg	408 lb
. buoyancy tube diameter :	0.55 m	1'10"
. folded dimensions :	Metric 1700 x 750 x 675mm	
	US 59" x 30" x 27"	

##### **SAFETY / INFLATION**

. number of airtight compartments in main buoyancy tube:	5
. intercommunication / inflation valves :	4
. inflatable keel :	1
. lower tubes :	2
. SCUBA/CO2 inflation points :	2
. overpressure valves :	5
. total airtight chambers : 5 MBT = 2 LBT + 1 KBT	8

##### **ENGINE POWER**

. engine shaft length :	long- 508mm	20"
. <u>maximum HP with roll-up floorboards</u> :	41 kW	55 HP
. <u>maximum HP with 4 sections hard deck</u> :	60 KW	80 HP
. maximum weight of engine with hard deck :	140 KG	308 lbs
. maximum HP with 2 engines & hard deck :	2 x 30 KW	2 x 40 HP
. maximum weight of engines :	2 x 95 KG	2 x 209lbs

THIS MATERIAL CONTAINS PROPRIETARY DATA BELONGING TO ZODIAC INTERNATIONAL. UNAUTHORIZED DISCLOSURE, USE OR REPRODUCTION WILL RESULT IN LIABILITY. ZODIAC RESERVES THE RIGHT TO CHANGE THE SPECIFICATIONS OF THIS TECHNICAL DATA SHEET WITHOUT NOTICE.

Dimensions and weight + or - 3 % (5% on prototype)

page 2 / 4

ZODIAC OF NORTH AMERICA INC  
MILITARY & PROFESSIONAL MARDIV  
540 THOMPSON CREEK ROAD – STEVENSVILLE - MD 21666 - USA  
Phone 410-643-4141 – Fax 410-604-0161  
[www.zodiacmilpro.com](http://www.zodiacmilpro.com) – [www.zodiac.com](http://www.zodiac.com)



## ZODIAC OF NORTH AMERICA INC

### MILITARY & PROFESSIONAL MARINE DIVISION

#### STANDARD EQUIPMENT

##### **FABRIC**

- . main buoyancy tubes, MBT : black, 1670 dtx, polyester, hypalon neoprene
- . lower buoyancy tubes LBT : black, 940 dtx, polyamide, hypalon neoprene
- . keel KBT : black, 940 dtx, polyamide, hypalon neoprene
- . bottom : black, 940 dtx, polyamide, hypalon neoprene

##### **TRANSOM - BLACK**

- . long shaft transom, marine plywood, polyurethane coated, black : 1
- . inserts for optional twin engine, filler kit block : 2
- . self-bailers, large flow with scuppers : 2
- . engine, aluminum mounting plate, twin engine : 1
- . transom sacrificial plate twin engine, (marine plywood) : 1

##### **FLOORBOARDS**

- . rigid floorboards, anodized aluminum with black anti-skid paint : 4 sections
- . stringers, heavy duty, anodized aluminum : 2
- . bow floorboard, marine plywood, with black anti-skid paint : 2 parts
- . bow thrust board, wood, with black anti-skid paint : 1
- . bow fabric retainer for optional roll-up floorboard: 2

##### **VALVES**

- . MBT intercommunication/inflation valves, with black Delrin flywheels : 4
- . keel inflation valve, on metal valve bases : 1
- . SCUBA/CO2 inflation points : 2
- . overpressure valves (Mirada), on metal valve bases (mechanical) : 5
- . connecting hoses from MBT to LBT through metal valves & with prisoner clamps: 2

##### **REINFORCEMENTS**

- . peripheral teardrop rubbing strake : 1
- . flat rubbing strake underneath keel : 1
- . flat rubbing strake underneath LBT : 1 + 1
- . triangular rub-strake underneath keel at bow : 1
- . reinforced rubber extrusions, aft on LBT : 1 + 1
- . anti splash triangles : 2
- . transom bottom stainless steel protection shoe : 1
- . double ovoid reinforcements on MBT/transom attachment : 2 + 2

THIS MATERIAL CONTAINS PROPRIETARY DATA BELONGING TO ZODIAC INTERNATIONAL. UNAUTHORIZED DISCLOSURE, USE OR REPRODUCTION WILL RESULT IN LIABILITY. ZODIAC RESERVES THE RIGHT TO CHANGE THE SPECIFICATIONS OF THIS TECHNICAL DATA SHEET WITHOUT NOTICE.

Dimensions and weight + or - 3 % (5% on prototype)

page 3 / 4



## ZODIAC OF NORTH AMERICA INC

### MILITARY & PROFESSIONAL MARINE DIVISION

#### HANDLING

. lateral carrying handles, hy/neo, webbing with reinforced "gorilla" hose grips :	12
. bow carrying handle, nickel plated brass coated black:	1
. exterior lifeline (peripheral) :	1
. interior lifeline :	2
. interior top MBT large tie down D rings, cress, coated black :	13
. interior mid-tube small tie down neo D rings, cress, coated black :	2

#### TOWING & LIFTING

. bow large towing D rings, cress & hy/neo, coated black :	2
. stern large towing D rings, cress & hy/neo, coated black :	2
. lifting points transom :	2
. lifting points bow, thrustboard :	2
. towing V :	1

#### OTHER EQUIPMENT

. 4 runners with straps for floorboard tracks :	2 sets
. hard deck floorboard port/starboard rails tracks :	yes
. boat carrying bag, cross type, large webbing reinforcements, 8 handles :	1
. foot pumps + high/low temperature hoses :	2
. paddles (aluminium shaft, high impact plastic blade, all black) :	9
. paddle holders (fabric flap with large fastening buckle) :	2 sets
. bow storage bag, removable, splash proof :	1
. transom filler block, for twin engine installation :	1
. transom and filler block aluminium protection, U shape, black :	1
. ZNA capacity plate :	1
. repair kit boxes ( <u>without</u> glue cause OSHA requirements) :	2
- 1 pressure gauge, black	
- 1 brush	
- 12 x 60 mm hy/neo patches, black, 940 dtx	
- 1 small leak stopper (Z5912)	
- 1 large leak stopper (Z5913)	
- 1 clamp shell leak stopper (Z2559)	
- 1 pumice stone	
- 1 Delrin valve cap	
- 1 Delrin valve inserts	

#### Note :

F530 IAB needs 2 x 80 cu.ft. SCUBA bottles for it's inflation.

THIS MATERIAL CONTAINS PROPRIETARY DATA BELONGING TO ZODIAC INTERNATIONAL. UNAUTHORIZED DISCLOSURE, USE OR REPRODUCTION WILL RESULT IN LIABILITY. ZODIAC RESERVES THE RIGHT TO CHANGE THE SPECIFICATIONS OF THIS TECHNICAL DATA SHEET WITHOUT NOTICE.

Dimensions and weight + or - 3 % (5% on prototype)

page 4 / 4

ZODIAC OF NORTH AMERICA INC  
MILITARY & PROFESSIONAL MARINE DIV  
540 THOMPSON CREEK ROAD – STEVENSVILLE - MD 21666 - USA  
Phone 410-643-4141 – Fax 410-604-0161  
[www.zodiacmilpro.com](http://www.zodiacmilpro.com) – [www.zodiac.com](http://www.zodiac.com)