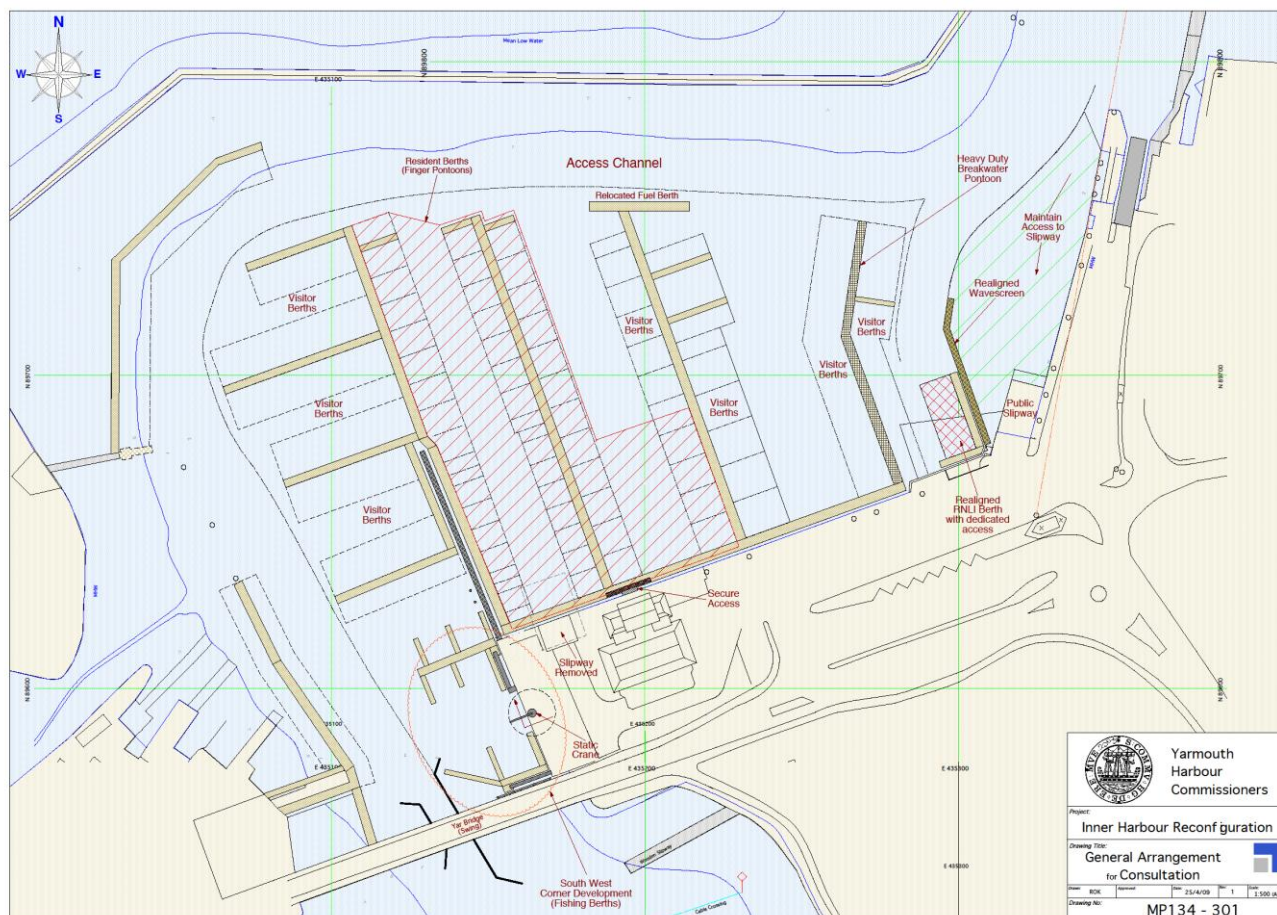


Yarmouth Harbour Commissioners Inner Harbour Reconfiguration Proposals



November 2009 Exhibition Handout



Plan showing – Yarmouth Inner Harbour Reconfiguration Proposals

Background

Yarmouth Harbour Commissioners as the Navigation Authority for Yarmouth also have a very important role as Harbour custodian, ensuring the Harbour is maintained in good condition and remains viable into the future. The Commissioners have considered a number of options over the years and have sought from harbour users comments and suggestions as to how the harbour could be improved. A consultation exercise has been undertaken with resident berth holders & visiting harbour users to establish the requirements and suggestions of both user groups.

Feedback received from the Resident and Visitor Surveys highlighted a number of key considerations:

1. Over a quarter of resident berth holders have encountered a navigational conflict within the Harbour, due to layout and management of berths and swing bridge operation
2. The existing water taxi arrangement received the poorest results in terms of effectiveness
3. There is clear demand to increase the number of walk ashore berths within Yarmouth for both visitor and resident berths

The Inner Harbour Reconfiguration seeks to address the issues raised by harbour users and use them to shape the form of berthing provisions within the Inner Harbour. The proposed Inner Harbour layout addresses each of the key issues raised by customers and will begin to meet the demands for improved mooring facilities.

Précis of proposal information

The proposals being taken forward by Yarmouth Harbour Commissioners seek to optimise the water space within the harbour, rationalise the current berthing arrangement, creating greater

walk-ashore pontoon berthing for both residents and visitors, as well as improving key areas of navigational conflict.

The proposals are separate to the scheme for the South West Corner which will provide dedicated facilities for the fishing fleet.

The proposals specifically address:

Moorings

The optimisation of the water space allows the introduction of a greater number of walk ashore berths and a consequent reduction in pile and harbour moorings.

The layout will not increase the overall berth numbers and the aspiration is to maintain visitor and resident berths at current levels - nominal capacity 300 berths with an approximate 50/50 split of resident and visitor berths.

Pontoons

To maintain the visual character of the Harbour, all pontoon equipment will be of a similar form to that currently present. There will be an increased provision of water and electrical services to berths

Fuel Berth

The reconfiguration offers an ideal opportunity to address navigational concerns as well as improving the infrastructure of the facility. The relocated fuel berth provides an increased number of dispensing points and concentrates the associated vessel movements immediately adjacent to the navigation channel.

Main Navigation Channel

The project will address the alignment of the channel through the Harbour and on to the River Yar. The reconfiguration opens up the area to the north of the Inner Harbour and creates clearer water space through which vessels can navigate, also improving the lines of sight for skippers in the area.

RNLI Berth

The proposals seek to realign the RNLI berth to reduce the area of water required for the lifeboat's navigation, and to offer a better orientation for the RNLI vessel to leave and return to the berth and generally makes better use of the available water space.

Slipways

The proposals will considerably reduce the requirement for tenders to access the harbour moorings as the vast majority of Inner Harbour berths will be walk ashore. This therefore negates the need to maintain the slipway located to the west of the Harbour Office. The two Public slipways within Yarmouth Harbour will remain and continue to operate unhindered by the proposals.

Project Timetable

26 th Oct 2009 – 15 th Jan 2010	Consultation Period
26 th Oct 2009	YHC Meetings with Employees, Media and Local Bodies
3 rd & 4 th Nov 2009	Public Exhibition
10 th & 11 th Nov 2009	Public Exhibition
15 th Jan 2010	Stakeholder consultation period closes
25 th Jan 2010	Consultation report to the YHC Board
Feb – Apr 2010	Finalise plans
May 2010	Consent applications for Inner Harbour Reconfiguration Project submitted to Regulators
Works Period	Winter 2010/11